

SAFETY DATA SHEET

FIRE:
REACTIVITY:
PERSONAL PROTECTION:

Tel 602-424-9990
Corporate Headquarters
Fax 602-424-2999
In U.S. Call CHEMTEL 1-800-255-3924
24 Hour Emergency Phones
Outside U.S. call CHEMTEL Collect at:
1-813-248-0585
www.keycolour.net

HMIS RATINGS:

HEALTH:

1
0
0
H

SECTION 1: PRODUCT IDENTIFICATION

Product I.D.:

J501

Product Name:

ORANGE POLY SHOP TOWEL 4 OZ

cember 1, 2011

Effective Date:

September 28, 2012

SECTION 2: HAZARD IDENTIFICATION AND EMERGENCY OVERVIEW

Emergency Overview:

Unprotected contact may cause mild-eye-respiratory-skin irritation.

Eye Contact:

Depending on duration and personal sensitivity, unprotected contact may cause mild irritation, discomfort, redness, watering, itching or other effects. Heavy contact or for prolonged period may increase effects. Follow ALL supervisor and Personal Protection instructions in Section 8 of this SDS.

Skin Contact:

Depending on degree of unprotected contact with product and individual sensitivity, may cause mild irritation to skin, redness, rash, itching, and other effects. Constant/repeated long-term heavy contact with some powdered products may cause abrasion of skin. Some components may be absorbed through unprotected skin causing or adding to effects.

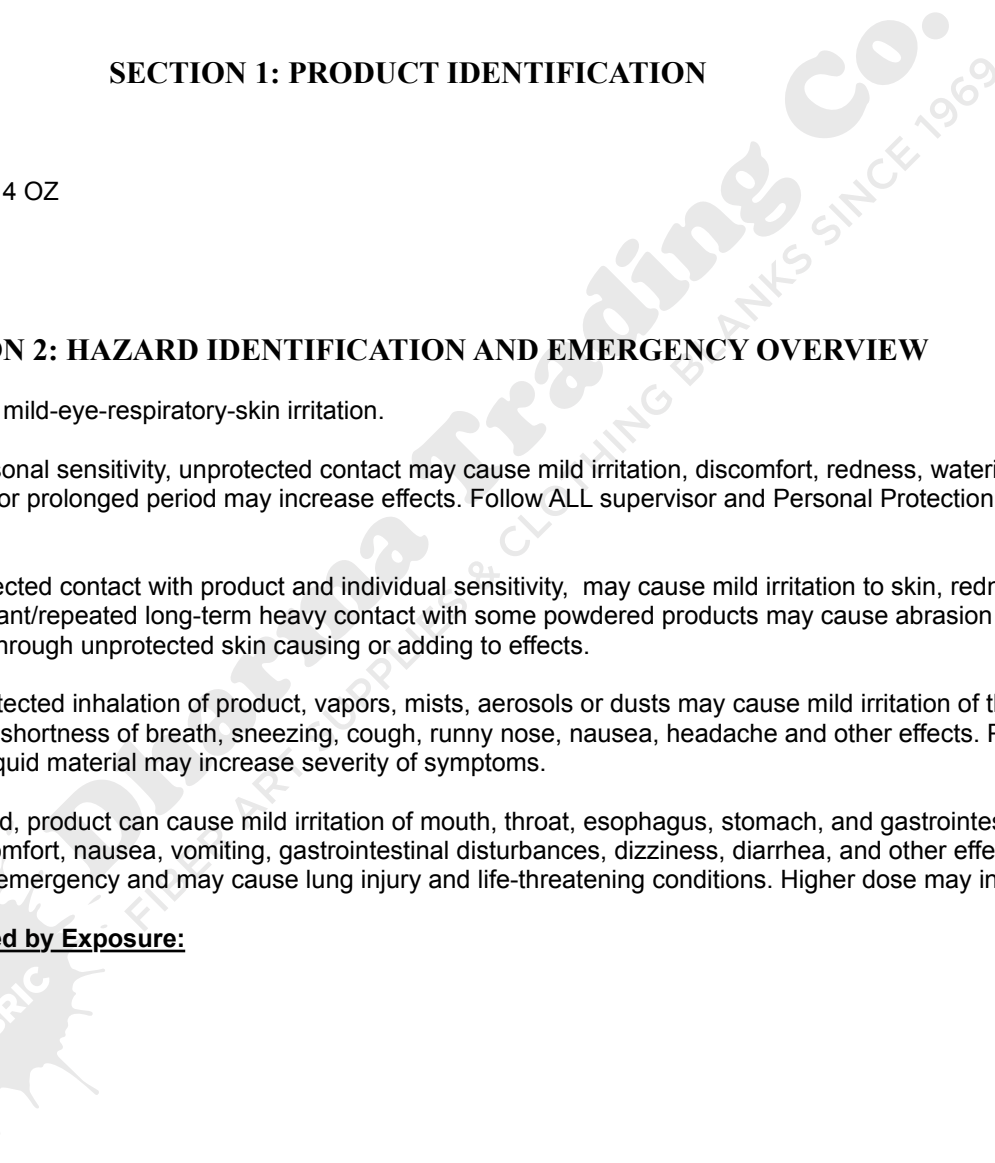
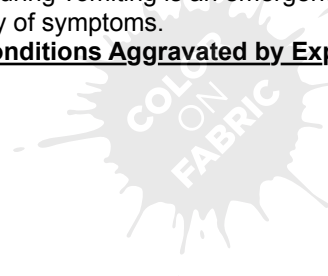
Inhalation:

Depending on duration of unprotected inhalation of product, vapors, mists, aerosols or dusts may cause mild irritation of the nose, throat, lungs and mucous membranes, shortness of breath, sneezing, cough, runny nose, nausea, headache and other effects. Prolonged or heavy exposure, or heating of liquid material may increase severity of symptoms.

Ingestion:

Depending on amount swallowed, product can cause mild irritation of mouth, throat, esophagus, stomach, and gastrointestinal tract, upset stomach, abdominal discomfort, nausea, vomiting, gastrointestinal disturbances, dizziness, diarrhea, and other effects. Aspiration into lungs during vomiting is an emergency and may cause lung injury and life-threatening conditions. Higher dose may increase irritation and severity of symptoms.

Medical Conditions Aggravated by Exposure:



Improper protection allowing contact with vapors, mists, aerosols, liquids, splashes or dusts of product by inhalation, eye contact, or skin contact may aggravate pre-existing conditions or diseases of the respiratory system, skin, or eyes. Product containing solvents may aggravate Central Nervous System conditions or diseases. Individuals with above-noted conditions or known or suspected chemical sensitivities or allergies should avoid working with chemicals.

Skin Sensitization:

Not known to cause skin sensitization. With careful handling and when good chemical hygiene procedures are followed, harmful effects are not expected. As a precaution against unforeseen or unexpected sensitivity or possible allergic reactions, follow ALL Personal Protection instructions in Section 8 of this SDS.

Respiratory Sensitization:

Not known to cause respiratory sensitization. With careful handling and good chemical hygiene procedures being followed, no harmful effects are expected. As a precaution against unforeseen or unexpected sensitivity or possible allergic reactions, follow ALL Personal Protection instructions in Section 8 of this SDS. All PPE must be cleaned and maintained after each shift. All exposures should be avoided. Individuals known to be, or suspected to be sensitive to chemical exposure should not work with chemicals.

Special Warnings:

None for this material

Unusual Health Hazards:

None for this material

Supplemental Hazard Information

No additional information is currently available

Notes to Physician

Treat Symptomatically based on Section 2 Hazard Warnings and Section 3 ingredients unless indicated otherwise

Cancer Information:

*** Not known to contain carcinogens ***

SECTION 3: OSHA HAZARDOUS INGREDIENTS

Unprotected contact with Section 3 ingredients may be hazardous based on OSHA 29 CFR 1910.1200 & related appendices. Components not listed are trade secrets, non-hazardous, or not reportable. This SDS is not intended to offer full disclosure, but all component information is available to medical or emergency personnel. All hazards are based on contact exposure. Reducing or eliminating contact can reduce or eliminate risk. Use protective equipment and clothing in Section 8 to minimize or eliminate contact. Effects may be unpredictable and may vary from person to person due to individual reactions. Users are responsible for hazard determination and communication. Unless indicated otherwise, non-carcinogenic components are indicated within a 1-10% range, and investigated or potential carcinogens within a 0.1-1% range. HMIS ratings are based on data interpretation, and vary from company to company. They are intended only for quick, general identification of the degree of potential hazards. Hazards range from 0 (Minimal) up to 4 (Severe). Consult the National Paint & Coatings Association HMIS Manual for detailed information on ratings. To handle material safely, consider all information in this SDS.

Important Notice:**SECTION 4: FIRST AID INSTRUCTIONS**

Immediately rinse with flowing water for at least 15 minutes while holding eyelids open. Get immediate medical attention, as a precaution.

Eye Contact:

Immediately remove contaminated clothing. Wash affected area with soap and rinse with plenty of water. Get medical attention, as a precaution.

Skin Contact:

COLOR
ON
FABRIC

FIBER ART SUPPLY & CLEANERS SINCE 1969

Immediately move person to fresh air. If breathing is difficult give oxygen, call 911, calm the individual. If not breathing, call 911, give artificial respiration (CPR) until medical help arrives. Have this Material Safety Data Sheet available.

Inhalation:

Do not induce vomiting unless directed to do so by a doctor or by other emergency medical personnel. Forced vomiting of certain chemicals may cause aspiration and lung damage. Have this Material Safety Data Sheet available.

Ingestion:**SECTION 5: FIRE FIGHTING INSTRUCTIONS****Flash Point:**

Not applicable or not established

Auto-ignition Temperature:

Not applicable

LEL:

Not applicable

UEL:

Not applicable

Unusual hazards:

None expected

Other Hazards:

None known

Types of Extinguishers:

CO2, dry chemical, foam, water fog or spray depending on type of fire

Fire Fighting Directions:

Wear self-contained breathing equipment and fire-proof clothing. Use water spray to cool fire exposed containers if they cannot be safely moved.

SECTION 6: ACCIDENTAL SPILL OR RELEASE INSTRUCTIONS**Special Precautions:**

None known. Follow general precautions shown below.

Reporting:

Check the RQ

Static Discharges:

Take precautionary measures against static discharges when cleaning up leaks or spills of powders, combustibles, or flammable liquids. Containers should be properly grounded with metal straps, cables or other appropriate means to relieve static electricity build-up or generation.

Environmental Protection:

Immediately dike liquid spills with inert absorbent material (sand, "Oil Dry" or other commercially available spill absorbent) to contain and soak up liquid. Prevent material from entering floor drains, sewers, or any bodies of water. For powder spills, use sweeping compound, sawdust, or other appropriate material to contain dust. If possible, recover any uncontaminated materials to re-use.

Protective equipment and clothing:

Wear all proper personal protective equipment and clothing to care for spill situation. See section 8 of this MSDS.

Clean up:

After containing liquid spill by diking and soaking up with inert absorbent material, place in labeled container to be sealed for proper and regulated disposal. Only the slightest residue should remain. Try to save uncontaminated material for reuse whenever possible. For powders, use sweeping compound to minimize dust and pick up as much product as possible. Do not allow liquids to seep into drains, sewers, lakes, rivers, etc. Check Sections 1 and 2 for dye description or type. Solvent dye residue may be cleaned by scrubbing with detergent, depending on type. Do not add water to water-soluble dyes. Dye is concentrated. This will increase amount of color to remove. All cleaning or scrubbing liquids used should be absorbed and placed in labeled containers for correct disposal. Absorbent material containing solvents may release combustible or flammable vapors and should be handled accordingly, properly labeled and disposed. Check Sections 2, 5, 13 & 15 for applicable instructions and regulations.

SECTION 7: HANDLING AND STORAGE**Warnings and Precautions:**

No special precautions anticipated. Wear all PPE in section 8 as a precaution, and avoid physical contact with material.

Personal Protection:

Wear ALL proper personal protective equipment as outlined in section 8 of this SDS.

Handling, Storage & Temperature Conditions:

Keep containers tightly sealed in cool & dry area, out of direct sunlight. FOR PRODUCTS LISTING FLAMMABLE/COMBUSTIBLE SOLVENTS or LOW FLASH POINTS: Store away from fire hazards and ignition sources, high heat, open flames, welding, hot plates, steam pipes, radiators, etc. Maintain good ventilation. Guard against static discharges. Ground all containers before mixing or filling. Use non-sparking tools to open, close or otherwise work with containers. Limit indoor storage to approved areas with automatic sprinklers. Vapors expected to be released when material is heated during process operations.

General precaution for powders: Although unlikely in most instances, GUARD AGAINST DUST EXPLOSION HAZARD. Eliminate or keep dust to a minimum. Under the right conditions, high dust concentrations of certain particle sizes mixed with air in a critical ratio in the presence of an ignition source can theoretically cause a dust explosion.

At a minimum, follow all Section 8 recommendations for Exposure Controls and Personal Protection. FOR WATER-BASED PRODUCTS: DO NOT FREEZE. Also ground containers when filling or mixing powders.

SECTION 8: EXPOSURE CONTROLS AND PERSONAL PROTECTION**Note: Selecting protective equipment & clothing:**

When choosing personal protective equipment and clothing, consider each worker's environment, all chemicals being handled, temperature, ventilation, and all other conditions. Determination of the level of protection needed for the eyes, skin and respiratory system under working conditions is the responsibility of the product end-user or shift supervisor. SDS Sections 2, 3, 8 and 11 should be consulted.

Eye protection:

As a precaution, wear indirectly vented, splash-proof chemical safety goggles. When handling liquids, wear splash-proof goggles under a clear face-shield. Face shield is not to be used without these goggles. The type or extent of protection needed should be determined by the product end-user or shift supervisor.

Skin Protection:

Always wear impervious, chemical-resistant synthetic or rubber gloves. Check with manufacturer for best glove for the material being handled. Wear good quality long sleeved work shirt, coveralls, and a rubber or plastic apron. Wash hands after handling and before eating, drinking or using restroom. Shower after each shift. Clean contaminated but reusable protective equipment and clothing before reusing and wearing again. Discard contaminated disposable gloves and clothing. The type or extent of protection needed should be determined by the product end-user or shift supervisor.

Respiratory Protection:

Depending on type of material handled and processing conditions, it is recommended that an appropriate NIOSH approved organic vapor/mist respirator, or dust respirator (with proper filters as required) be worn when exposure to product is expected. After each shift or when equipment becomes contaminated, clean respirator and replace filters in compliance with 29 CFR 1910.134. The type or extent of protection needed should be determined by the product end-user or shift supervisor.

Eye Washes and Other Protection:

Eye wash stations and drench showers should be located within 100 feet or 10-second walk of the work area per ANSI standard Z358.1-1990.

Ventilation:

Local exhaust should be used to maintain exposure limits below specified amounts recommended by OSHA, NIOSH, or ACGIH and to draw spray, aerosol, vapors, or dusts away from workers and prevent routine inhalation. At least 10 air changes per hour are recommended for good room ventilation.

Not referenced in literature

Airborne Exposure Limits:

SECTION 9: PHYSICAL AND CHEMICAL PROPERTIES

pH:
 % Water Content:
 % Total Solids/Non-Volatiles:
 % Total VOC:
 0
 % Solvents:
 0
 % Other Components:
 Undisclosed
 Boiling Point:
 Not established
 Color:
 Dark Blue
 Form:
 Powder
 Odor:
 None
 Freezing/Melting Point:
 Lbs. per gallon:
 Specific Gravity (Liquid):
 :
 Water Solubility:
 Dispersible
 Other Properties:
 No further data
 All Data shown above are typical values, not specifications.

SECTION 10: STABILITY AND REACTIVITY

Product is expected to be stable under normal, ambient (controlled) conditions concerning heat, moisture, pressure, fire and ignition hazards, and ventilation. Contact with incompatible or reactive materials may cause hazardous reactions in some products if indicated. Check information below.

Stability:**Hazardous Polymerization:**

Product will not undergo polymerization.

Conditions to Avoid:

None known

Incompatible Materials:

None known

Hazardous Decomposition Products:

In fire: Oxides of carbon

Possible Hazard Reactions:

None known

Oral LD50 (Rat):

No data currently available

Dermal LD50 (Rabbit):

No data currently available

Eye Effects (Rabbit):

No data currently available

Skin Effects (Rabbit):

No data currently available

Mutagenicity:

No data currently available

Inhalation LC50 (Rat):

No data currently available

Skin Sensitization (Guinea Pig):

No data currently available

Respiratory Sensitization:

No data currently available

Additional Toxicity Data:

No data currently available

Supplemental Test Data:

No data currently available

Other Data:

No data currently available

SECTION 11: TOXICOLOGICAL INFORMATION

SECTION 12: ECOLOGICAL DATA

No data currently available

BOD:

No data currently available

COD:

No data currently available

Aquatic Toxicity:

No data currently available

Biodegradability:

No data currently available

Persistence:

No data currently available

Ecotoxicity:

No data currently available

Sewage Treatment:

No additional data is available

Other Data:

No data currently available

Supplemental Test Data:

SECTION 13: DISPOSAL AND ENVIRONMENTAL CONSIDERATION

Reclaim all uncontaminated material to reuse, recycle or otherwise rework whenever possible.

Reuse of materials:

Do not release into sewers, water systems, ground systems or ecosystems without proper authorization.

Contain - Do not release:

Incinerate, treat, or bury (landfill), after sampling and testing, at facility approved by applicable federal, state, and local authorities.

Disposal Methods:

Empty containers may contain residue and/or vapors and should not be reused unless professionally cleaned and reconditioned. Crush if not cleaned, to prevent reuse.

Empty Containers:**Applicable Regulations:**

See Section 15 if regulated

Special Instructions:

See Section 15 if regulated

SECTION 14: SHIPPING AND TRANSPORTATION INFORMATION

DOT Regulations (Ground):

Hazard Label Required:

Not regulated

DOT Notes:

Not regulated.

IATA Regulations (Air):

Hazard Label(s):

Not Regulated

IATA Notes:

Not regulated.

IMDG / IMO Regulations (Watr):

Hazard Label(s):

Not Regulated

IMDG / IMO Notes:

Not regulated. SAFETY DATA SHEET (continued)

SECTION 15: REGULATORY INFORMATION

Regulatory List Reference:**SARA 311/312 Hazard Categories:**

Immediate / Acute Health Hazard:

YES

Chronic / Delayed Hazard:

NO

Fire Hazard:

NO

NO

Reactivity Hazard:

NO

Supplemental Regulatory Information:

No additional information applies, or no supplemental information is available at this time.

For additional international, federal or state regulatory compliance information not shown: 800-274-4393

Additional Info:**SECTION 16: OTHER INFORMATION****Reason for Revision:**

Data added to section 9. 120808

Reviewed:

120808 wln

The information and recommendations contained herein are based upon data believed to be correct. However, no guarantee or warranty of any kind, expressed or implied, is made with respect to the information contained herein. This Material Safety Data Sheet was prepared to comply with the OSHA Hazard Communication Standard 29 CFR 1910.1200, and supersedes any previous information. Previously dated sheets are invalid and inapplicable.

END OF MSDS

Disclaimer: